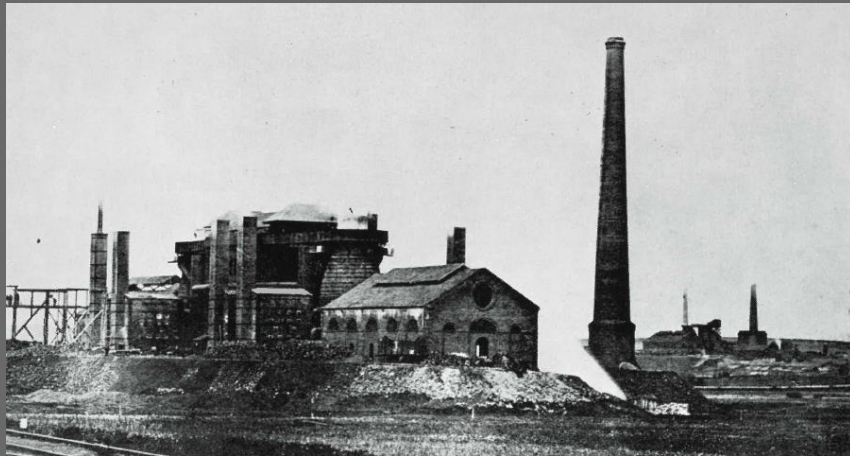




ArcelorMittal

ArcelorMittal Rodange



Rodange plant

Rodange plant has been created in **1872** under the name of S.A. des Hauts-Fourneaux de Rodange.

ANNUAL PRODUCTION

In 2018,
Rodange has produced 166 kilotonnes of steel
including 22 kilotonnes of billet for Gandrange.
Europe exportations represent 70%.
While worldwide exportations represent 30%.

STAR PRODUCT

Rodange is spacialized in long products
but mostly in GROOVED RAILS, this
market has a huge development potential.

DID YOU KNOW ?

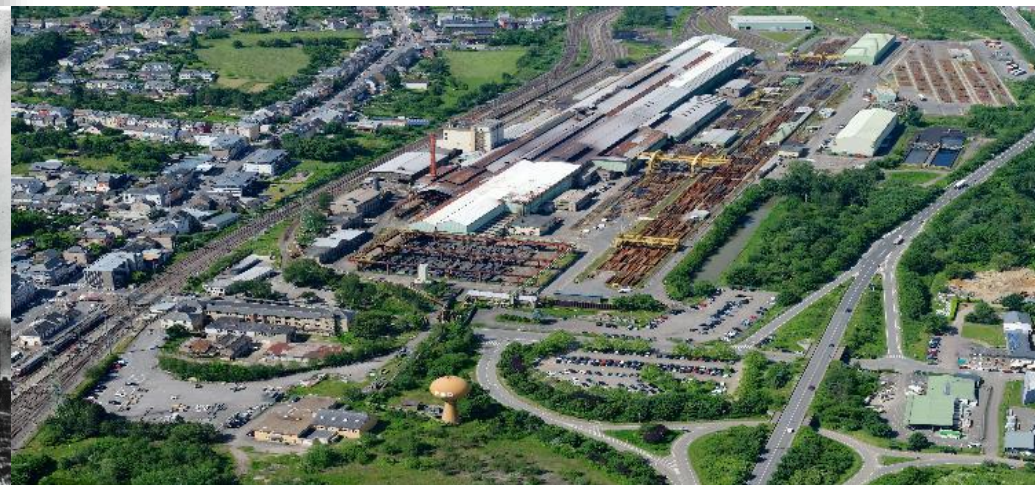
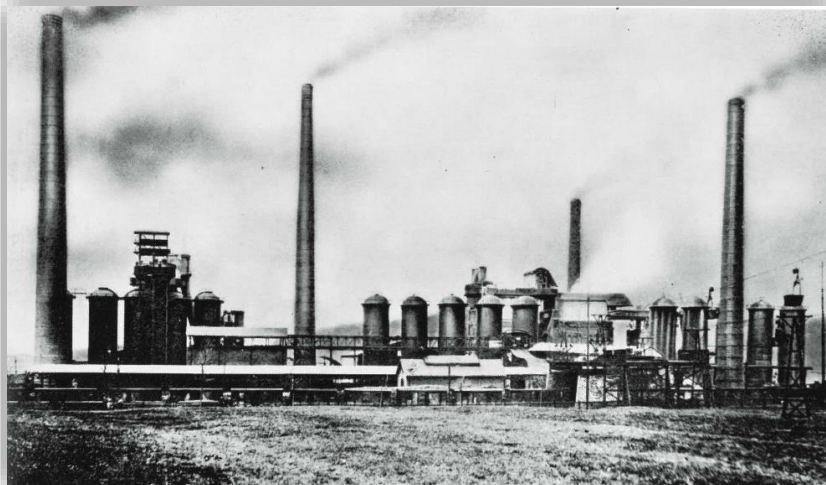
7 YEARS

Is the long period without any work injuries in
Rodange (may 2019).

11 temporary workers

205 employees

68 subcontractors



Rodange facilities

Facilities on Rodange plant are perfectly adapted too personnalized productions.



FACILITIES

- Rolling mill with a 300.000tons capacity (within 3 rolling stands installed in 2007)
- Walking beam furnace
- Hot saw
- Blooming
- Cooling bed
- Straightening machines
- Installation for conditioning

STRONG POINTS

- Adaptability facing different type of products
- 100% of products are corresponding to G tolerance.
- Possibility to realize small productions:
Rodange is able to accept 300tons commands in contrary to other plant that should refuse.



Rodange products

Rodange is complementary to Belval and Differdange regarding the long products market.

RAILS



Crane & Special rails



Grooved rails



Light & Transport rails

SPECIAL PROFILES



Track shoes



Windmill flanges

MERCHANT BARS



Squares



UPN bars



Cathode bars



Mining sections



Angles



Investments and issues

Investments and issues contribute to the perpetual improvement of the quality of our products and management.

INVESTMENTS

In only 18 months, Rodange developed 11 grooved rail profiles which enables to cover more than 75% of the demand.

REACH A CRITICAL STEP OF PRODUCTION

- Thanks to :
- An activity covered by 2 teams, 75% charged.
 - A theoretical 300.000 tons capacity rolling mill.

PERSPECTIVES 2019

- Grow market shares focusing on Rodange assets : Quality, Service, Flexibility, Niche products.
- Adding 20 new profiles over last 3 years, today's focus is on consolidation and growth of production & sales.

